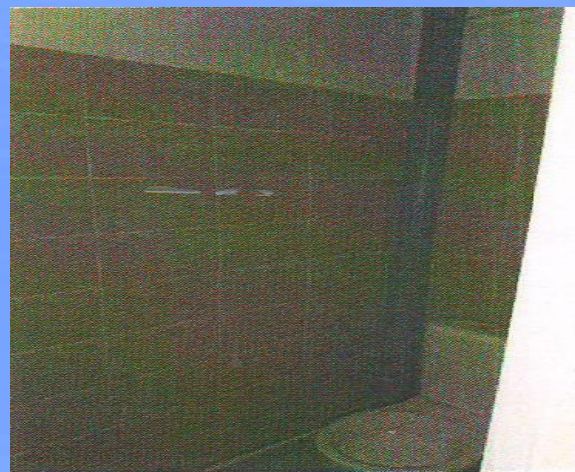
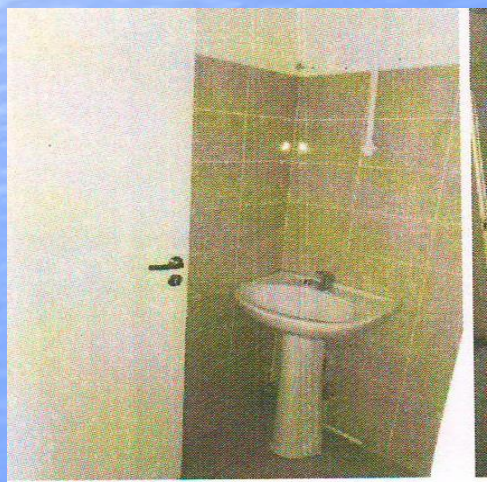
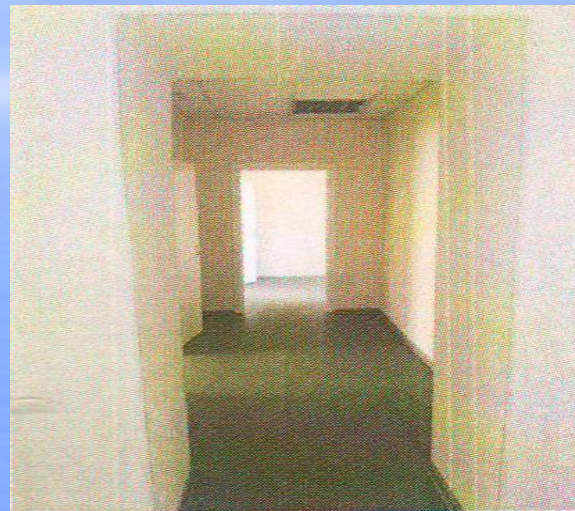
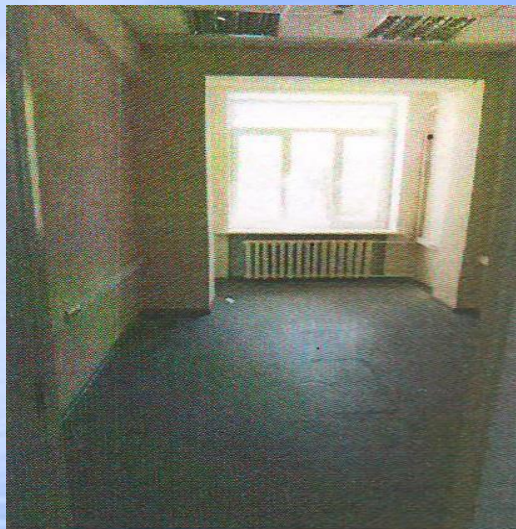


ЛОТ № 2

Встроенное нежилое помещение общей площадью 121,6 кв. м, расположенное на 1 этаже жилого дома с автоматической охранно-пожарной сигнализацией , г. Волжский Волгоградской области.

ФОТОГРАФИИ



The floor plan shows a building with a total height of $H=3.35$ and two internal sections with heights of $H=2.75$. The plan is divided into several rooms and corridors, with dimensions and area calculations provided for each.

Top Section (Height $H=2.75$):

- Room 10: 2.94×17.2
- Room 11: 3.82×17.3
- Room 12: 3.73×16.9
- Corridor 4.54: 4.54×17.3
- Corridor 4.54: 4.54×16.9

Bottom Section (Height $H=2.75$):

- Room 9: 2.95×13.2
- Room 8: 3.72×16.7
- Room 7: 1.75×5.8
- Room 6: 1.67×5.5
- Room 5: 5×2.21
- Room 4: 4×2.36
- Room 3: 3×7.4
- Room 2: 2×10.3
- Room 1: 1×7.2
- Corridor 2.64: 2.64×13.2
- Corridor 2.98: 2.98×10.3
- Corridor 3.44: 3.44×10.3
- Corridor 3.13: 3.13×10.3

ЭКСПЛИКАЦИЯ

[illegible]